

CERTIFICATE OF LOCATION OF GOVERNMENT CORNER

NORTH QUARTER Corner of Section 4, Township 106, Range 41, 5TH P.M.

STATE OF MINNESOTA, County of MURRAY

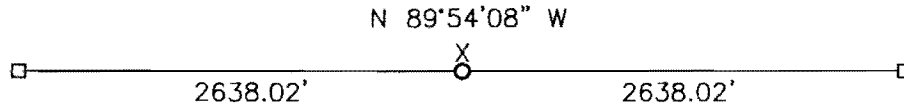
At the corner location shown on the sketch:

On _____ found a _____
DATE

left monument as found, lowered monument, removed monument (explain)

On 04-06-2007 placed a 1" IRON PIPE WITH SEAL #43844
DATE

SKETCH OF REFERENCE TIES



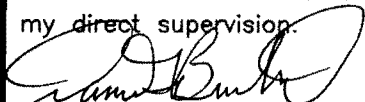
Steel fence post with survey marker placed on north side of corner

Minnesota State Plane Coordinate
System Murray County Datum
NAD83 (1996)

N: 163467.772
E: 498128.875

Statement of evidence relative to this corner location is on back of page.

I hereby certify that this document and the data contained herein was prepared by me or under my direct supervision.


SIGNATURE

Feb. 19, 2008
DATE

Registration No. 43844

Land Surveyor, Professional Engineer
 County Surveyor, County Engineer

OFFICE OF THE COUNTY RECORDER

County of _____

I hereby certify that this document was filed in the Co. Recorders office at _____ .M on the _____ day of _____ A.D. 20 _____

County Recorder _____

By _____, Deputy

DOCUMENT NO. _____

Statement of Evidence

In June 1861, J. W. Myers did the original survey of the township lines.

On April 6, 2007, Buettel-Moseng Land Surveying set a 1" iron pipe with seal #43844 midway and on line between section corners. We also placed a steel fence post with survey marker along the north side of the pipe.